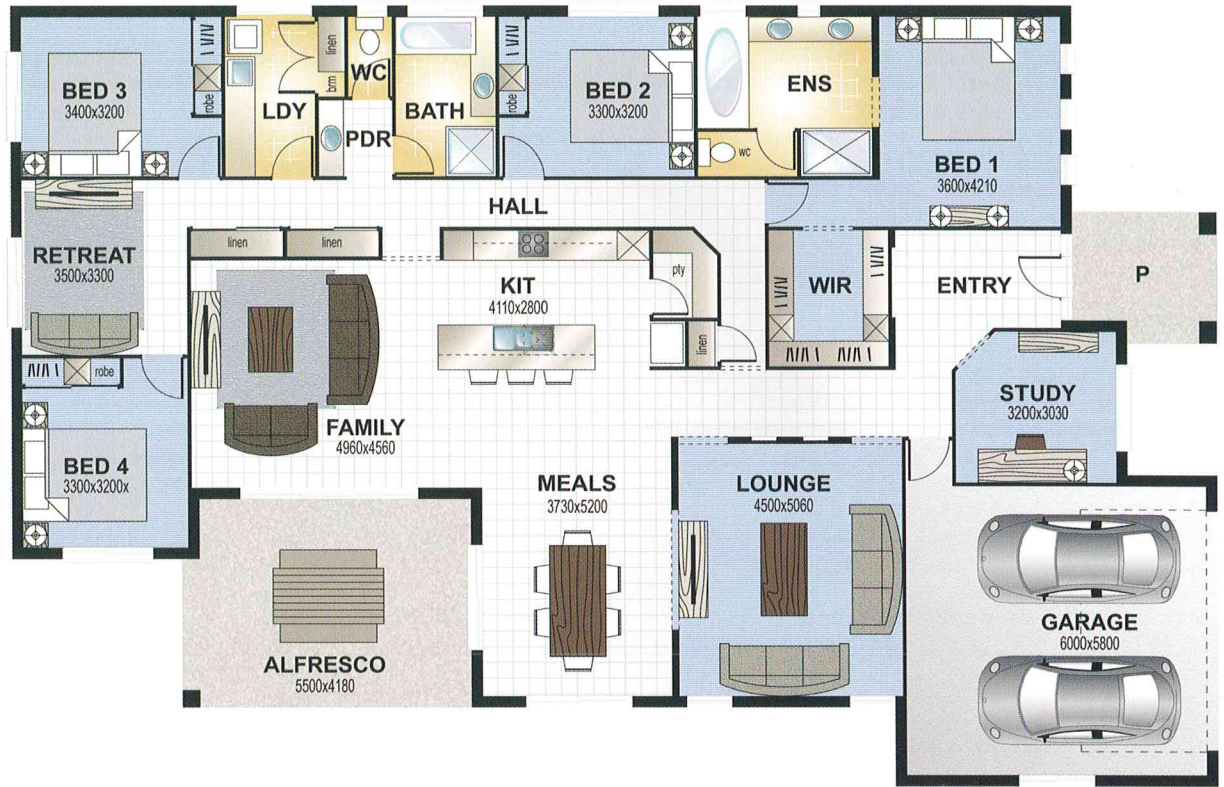


Top Quality at the Best Value!
www.topoftherangebuilders.com.au

the Valley View



24145mm x 15665mm



1300 486 872
4 TO TRB

TRB Builders
Top of the Range
Top Quality at the Best Value!

Living Areas	292.6 m ²
Porch	7.1 m ²
Alfresco	23.6 m ²
Total	323.3 m ²

This artist's impression and floor plan illustration represented in this brochure is for advertising purposes only. This does not form part of any contract.

VAL